

COPYRIGHT © WHEREIS® REGISTERED TRADEMARK OF SENSIS PTY LTD.

LOCALITY PLAN

NOT TO SCALE

SERVICES LEGEND

- T — — — T — — — T — — — OPTICAL FIBRE BELOW GROUND
- — — E — — — E — — — PROPOSED BELOW GROUND ELECTRICAL SUPPLY
- — — E — — — E — — — EXISTING BELOW GROUND ELECTRICAL SUPPLY
- FE — — — FE — — — ABOVE GROUND FEEDER CABLES
- — — W — — — W — — — PROPOSED POTABLE WATER MAIN

NOTES:

- THIS DRAWING SET IS A PRELIMINARY DRAWING ONLY AND IS ISSUED FOR COMMENT. IT IS NOT A DETAILED SURVEY / STRUCTURAL DRAWING AND THEREFORE COULD BE SUBJECT TO CHANGE.
- ALL DIMENSIONS ARE IN MILLIMETRES UNLESS SPECIFIED OTHERWISE.

PROPERTY DESCRIPTION

PART OF LOT A ON PLAN 948768

SITE STRUCTURE CO-ORDINATES (GDA94)
GPS READING ACCURACY: ±10m
CENTRE OF POLE

| | |
|-----------|--------------------|
| LATITUDE | -34.97277° (GDA94) |
| LONGITUDE | 149.02998° (GDA94) |

SITE LAYOUT

SCALE 1:2000
20m 0 20m 40m 60m 80m 100m SCALE 1:2000

UNAPPROVED
DRAWING



- PROPOSED 4.2m WIDE 'CYCLONE' ACCESS GATE TO MATCH EXISTING CONCRETE POST AND STEEL WIRE FENCE
- PROPOSED POINT OF SUPPLY (TBC PENDING POWER APPLICATION)
- PROPOSED CROSSOVER TO COUNCIL SPECIFICATIONS
- PROPOSED AMPLITEL DRY WEATHER ONLY ACCESS ROUTE
- PROPOSED AMPLITEL U/G CONSUMER MAINS APPROX. 115m (TBC, PENDING POWER APPLICATION)
- PROPOSED AMPLITEL SITE. REFER TO SHEET S1-1
- PROPOSED TELSTRA U/G FIBRE ROUTE (TBC, BY OTHERS)
- EXISTING DOUBLE ACCESS GATE
- EAST ST
- EXISTING BUILDING (TYP.)
- PROPOSED AMPLITEL SITE. REFER TO SHEET S1-1
- EXISTING DAM
- MURRUMBATEMAN ROAD
- BARTON HWY

SITE ACCESS

SCALE 1:5000
50m 0 50m 100m 150m 200m 250m SCALE 1:5000

PRELIMINARY



TOWER AMS SITE REF NSW008381
MURRUMBATEMAN 2
SITE LAYOUT AND ACCESS
9 EAST ST, MURRUMBATEMAN, NSW 2582

TO BE READ IN CONJUNCTION WITH SHEETS S1-1, S3 & S7.

| ORDER | DRAWN | CHKD | AMENDMENT | EXAM | APPD | DATE | ISS |
|-----------|-------|------|--------------------------------|------|------|----------|-----|
| BTS-23566 | JM | JG | PRELIMINARY- SP80002584WO49BMM | PE | AA | 06.12.24 | 1 |

© Amplitel PTY LTD as Trustee for the Towers Business Operating Trust (ACN 086 174 781) All rights reserved.

DWG NO.

NSW008381

SHT NO.

S1

SERVICES LEGEND

- T

T

T
- OPTICAL FIBRE BELOW GROUND
- E

E

E
- BELOW GROUND ELECTRICAL SUPPLY
- FE

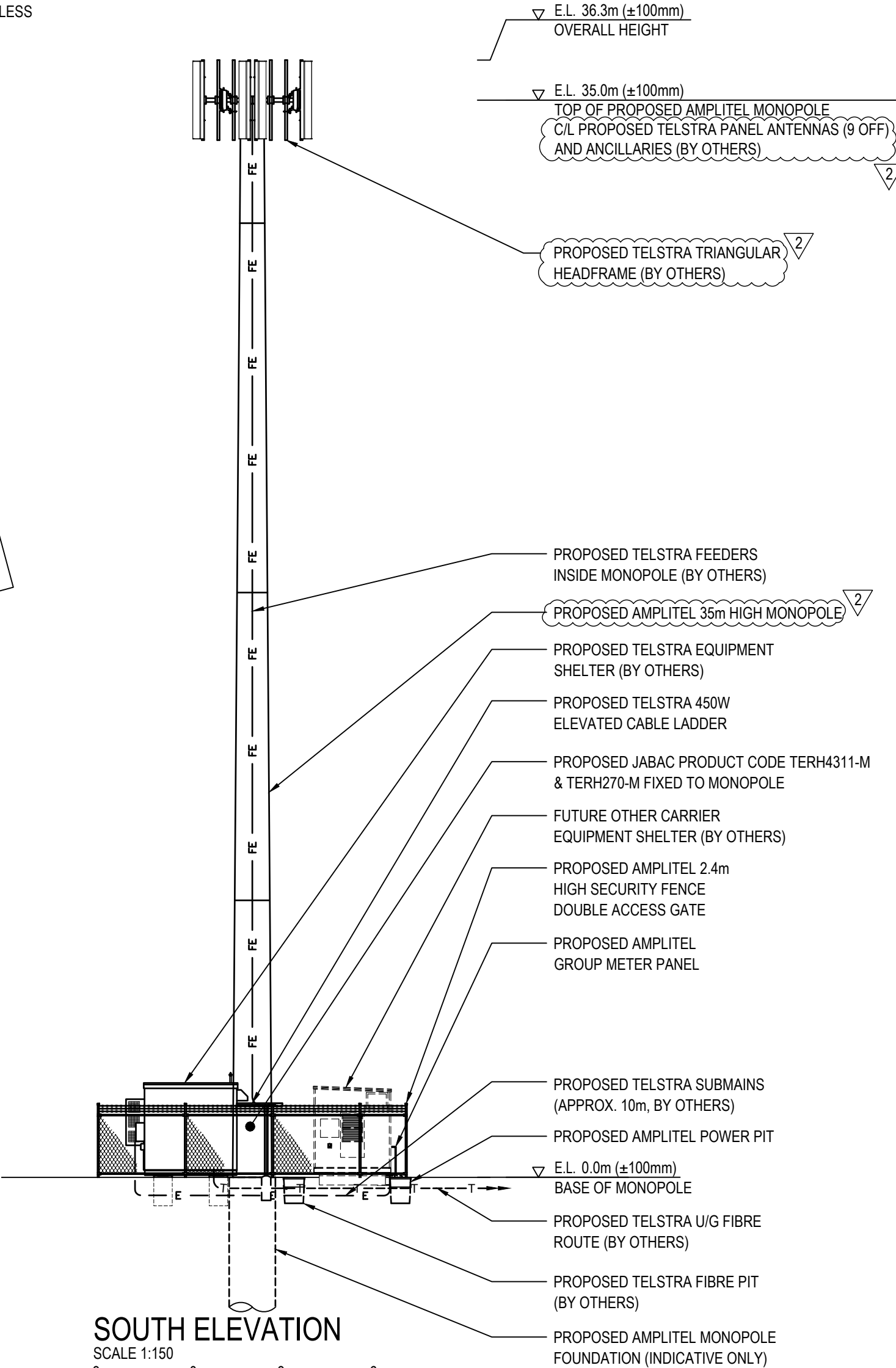
FE

FE
- ABOVE GROUND FEEDER CABLES

NOTES:

1. THIS DRAWING SET IS A PRELIMINARY DRAWING ONLY AND IS ISSUED FOR COMMENT. IT IS NOT A DETAILED SURVEY / STRUCTURAL DRAWING AND THEREFORE COULD BE SUBJECT TO CHANGE.
2. ALL DIMENSIONS ARE IN MILLIMETRES UNLESS SPECIFIED OTHERWISE.

UNAPPROVED
DRAWING



TO BE READ IN CONJUNCTION WITH SHEETS S1, S1-1 & S7.

| ORDER | DRAWN | CHKD | AMENDMENT | EXAM | APPD | DATE | ISS |
|-----------|-------|------|---|------|------|----------|-----|
| BTS-23566 | JM | JG | PRELIMINARY- SP80002584WO49BMM | PE | AA | 06.12.24 | 1 |
| BTS-23566 | JM | JG | PRELIMINARY- POLE HEIGHT AND ANTENNA QUANTITY REVISED | PE | AA | 30.01.25 | 2 |

©Amplitel PTY LTD as Trustee for the Towers Business Operating Trust (ACN 086 174 781) All rights reserved.

PRELIMINARY



AMPLITEL
Part of the Telstra Group

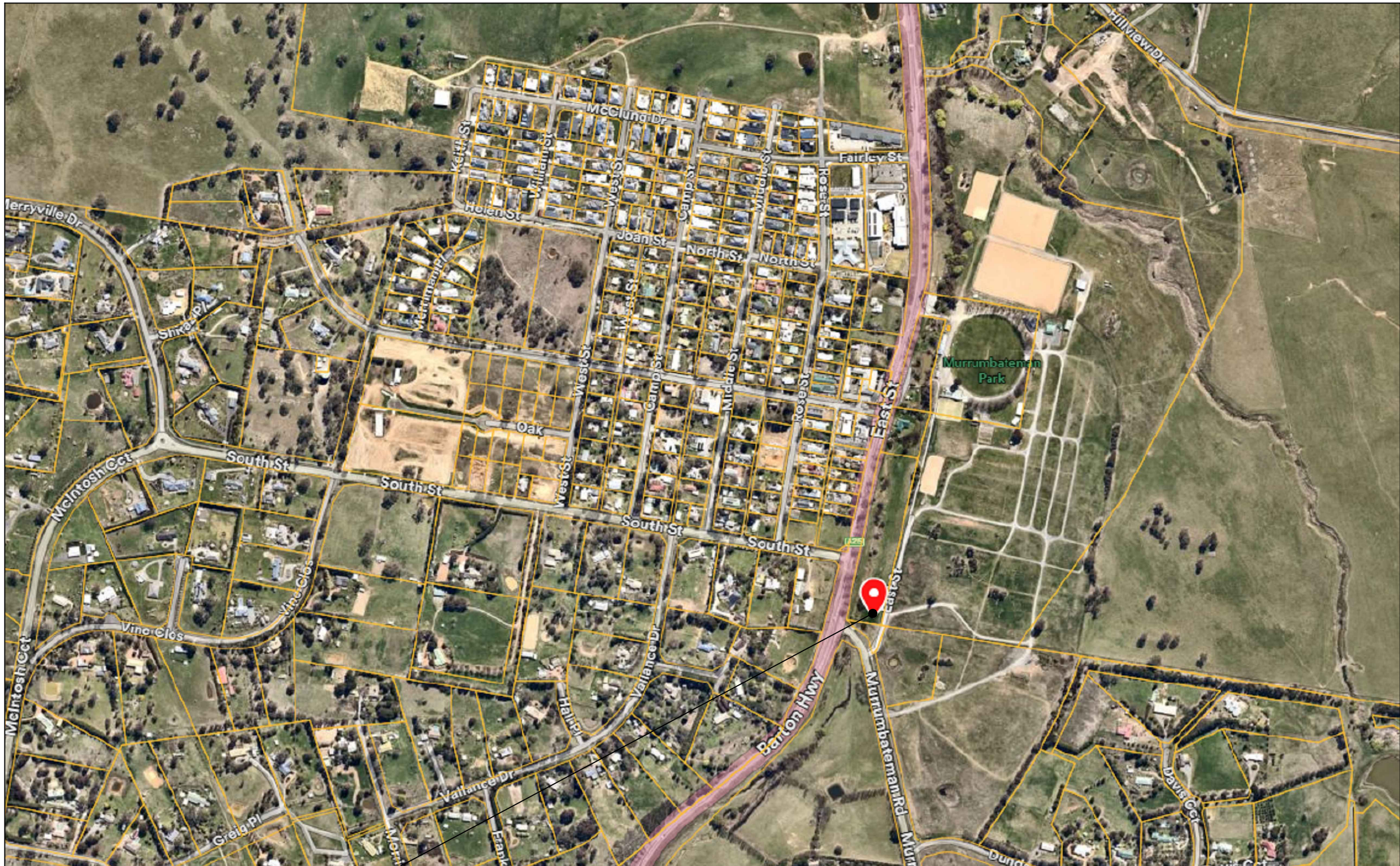
TOWER AMS SITE REF NSW008381
MURRUMBATEMAN 2
SOUTH ELEVATION
9 EAST ST, MURRUMBATEMAN, NSW 2582

DWG
NO.

NSW008381

SHT
NO.

S3



PROPOSED AMPLITEL SITE

AERIAL PHOTO LOCALITY PLAN

NOT TO SCALE

UNAPPROVED
DRAWING



TO BE READ IN CONJUNCTION WITH SHEETS S1, S1-1 & S3.

| ORDER | DRAWN | CHKD | AMENDMENT | EXAM | APPD | DATE | ISS |
|-----------|-------|------|--------------------------------|------|------|----------|-----|
| BTS-23566 | JM | JG | PRELIMINARY- SP80002584WO49BMM | PE | AA | 06.12.24 | 1 |

© Amplitel PTY LTD as Trustee for the Towers Business Operating Trust (ACN 086 174 781) All rights reserved.

PRELIMINARY



TOWER AMS SITE REF NSW008381
MURRUMBATEMAN 2
AERIAL PHOTO LOCALITY PLAN
9 EAST ST, MURRUMBATEMAN, NSW 2582

DWG
NO.

NSW008381

SHT
NO. S7